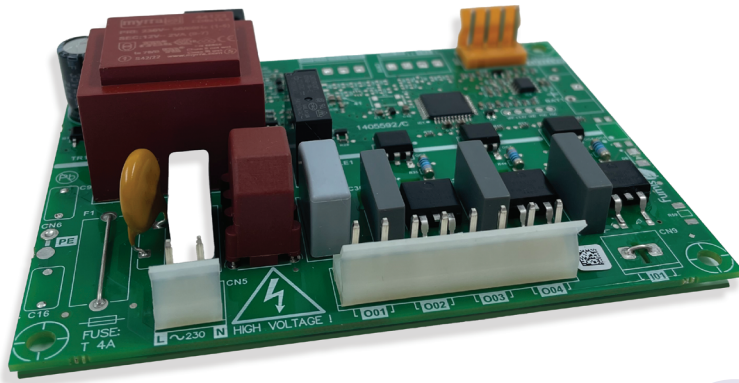
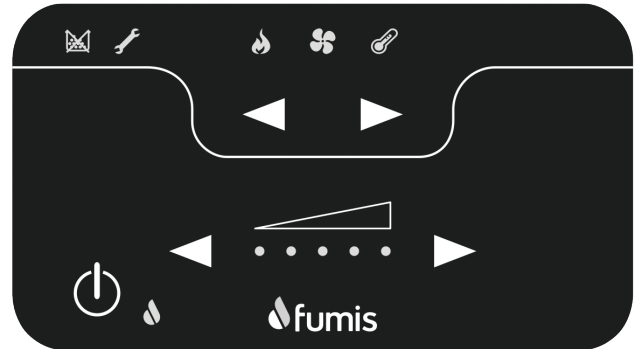
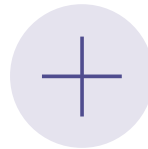


Fumis ESSENTIAL KIT

FUNDAMENTAL SOLUTION FOR CONTROLLING AND MONITORING COMBUSTION IN HEATING APPLIANCES.



Essential Controller



Essential UI

Key benefits:

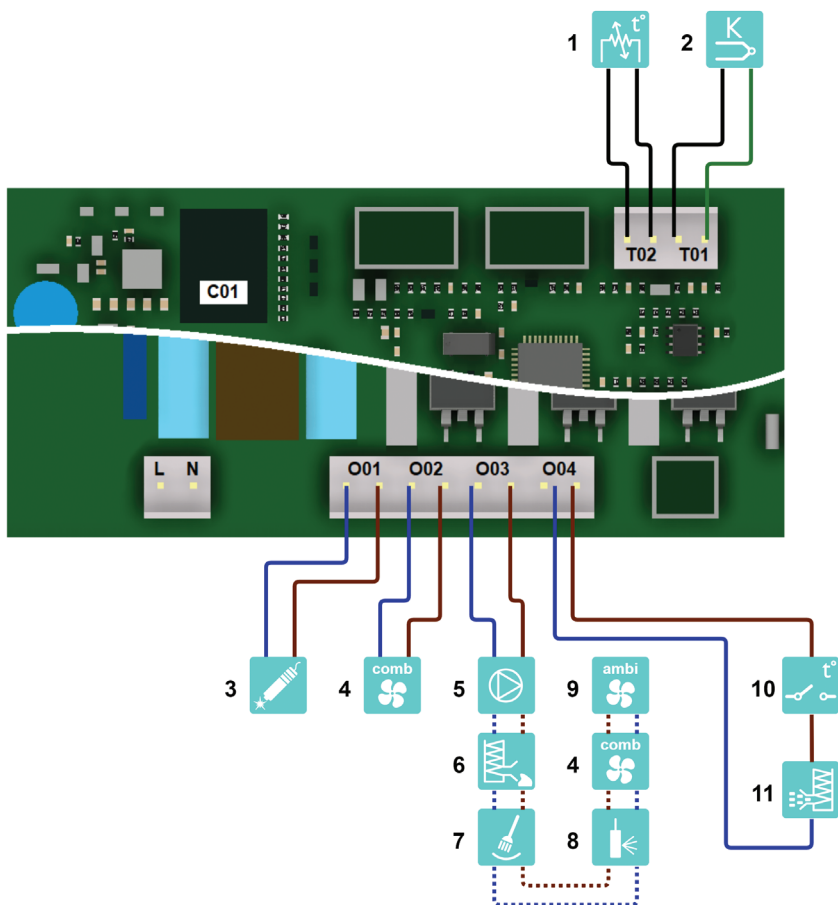
- User communication via capacitive touch interface
- Lower fuel consumption due to higher efficiency
- Lower heating cost due to optimum combustion

Meet the cornerstone of the Fumis Basic line: the Essential Kit, comprised of the Controller and UI. Engineered to meet the exact standards of fundamental combustion control needs.

The Fumis entry-level controller and Essential UI form a seamless partnership, ensuring precise control without unnecessary complexities. Crafted for efficiency and reliability, they deliver uncompromising quality at an accessible price point.

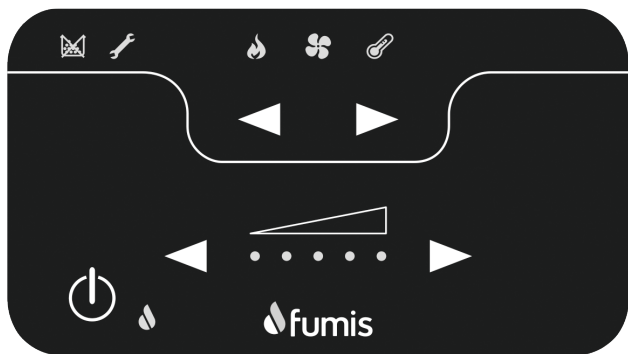
While functionality is paramount, aesthetics matter too. That's why the Fumis Essential UI is designed to complement any heating appliance, effortlessly blending simplicity with style.

Where reliability meets simplicity!



Fumis Essential Controller

- 1 Air/water temperature sensor (NTC)
- 2 Flue gas temperature sensor (K-Type)
- 3 Igniter
- 4 Combustion fan
- 5 Water pump
- 6 Ash extraction auger
- 7 Mechanical chamber cleaning
- 8 Air pulse cleaning
- 9 Ambient fan
- 10 Safety switch (STB)
- 11 Pellet feeder



ESSENTIAL UI

Fumis Essential UI

ON/OFF	YES
Burning power	Yes (1-5)
Fan speed	1x (0-5, Auto)
Desired/Actual temp.	1x (Desired - LEDs only)
Standby hysteresis	Fixed
Selectable antifreeze	Fixed
Error/Alert notification	Binary (LEDs)

DISCLAIMER: »Information contained in this publication regarding device applications and the like is provided only for your convenience and may be superseded by updates. It is your responsibility to ensure that your application meets with your specifications. ATech makes no representation or warranties of any kind whether express or implied, written or oral, statutory or otherwise, related to the information, including but not limited to its condition, quality, performance, merchantability or fitness for purpose. ATech disclaims all liability arising from this information and its use. No licenses are conveyed, implicitly or otherwise, under any ATech intellectual property rights.«