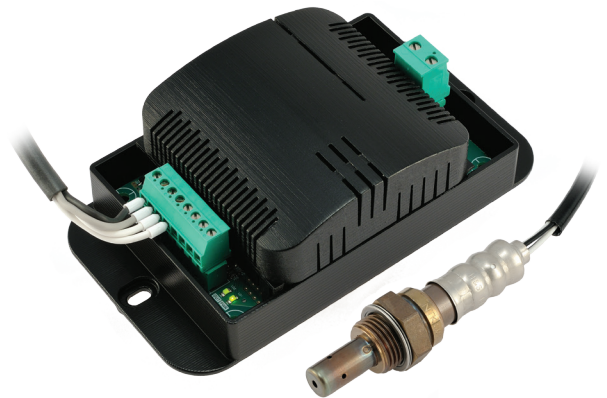


# Fumis LambdaTronic

## Lambda Universal Module

### LAMBDA PROBE NOW FOR FUMIS ALPHA CONTROLLERS

The range of Fumis products was upgraded with the LambdaTronic modular controller, which opens new possibilities for using Fumis Alpha controllers. LambdaTronic is designed as an independent module, which can also be used in other applications where controlling oxygen is an important parameter.



### Target applications:

Biomass burners, boilers and stoves (pellets, wood logs, wood chips etc.)

### Main advantages of using LambdaTronic:

- Increasing the efficiency of the heating device
- Optimization of emissions (hard particles and emissions in the form of gas)
- Automatic adaptation of your heating device to different fuel qualities
- Simple installation and implementation in the existing control system of the heating device

### How to use LambdaTronic on Fumis Alpha controllers:

LambdaTronic directly clips onto Fumis Alpha controllers. With just a few clicks, via PC- PRO, it is possible to activate the option of reading the lambda probe and set the desired value of the balance of oxygen in the flue gasses. From here on out, Fumis Alpha takes care of the optimal operation of the heating device.

### How to use LambdaTronic on other applications:

LambdaTronic is designed to be a universal module, that provides at the output the analog (PWM) signal. You can use it wherever you would like to monitor the oxygen content via this signal type.

### Technical Characteristics:

Temperature range	-20 °C to +70 °C
Humidity range	Max. 95 %, non condensing
Power supply	185 à 265 V AC, max. 200 mA
Input	Sonde lambda à bande étroite, 4 fils, avec élément chauffant intégré, Référence H&S Kabeltech- nic numéro 118.02-7100
Output	PWM, collecteur ouvert / alimentation externe, niveau d'oxygène combiné et diagnostic
Measuring range	0 to 21 % O <sub>2</sub>
Dimensions	110 x 54 x 63 mm
Mounting	DIN rail or 2 screws

DISCLAIMER: "Information contained in this publication regarding device applications and the like is provided only for your convenience and may be superseded by updates. It is your responsibility to ensure that your application meets with your specifications. ATech makes no representation or warranties of any kind whether express or implied, written or oral, statutory or otherwise, related to the information, including but not limited to its condition, quality, performance, merchantability or fitness for purpose. ATech disclaims all liability arising from this information and its use. No licenses are conveyed, implicitly or otherwise, under any